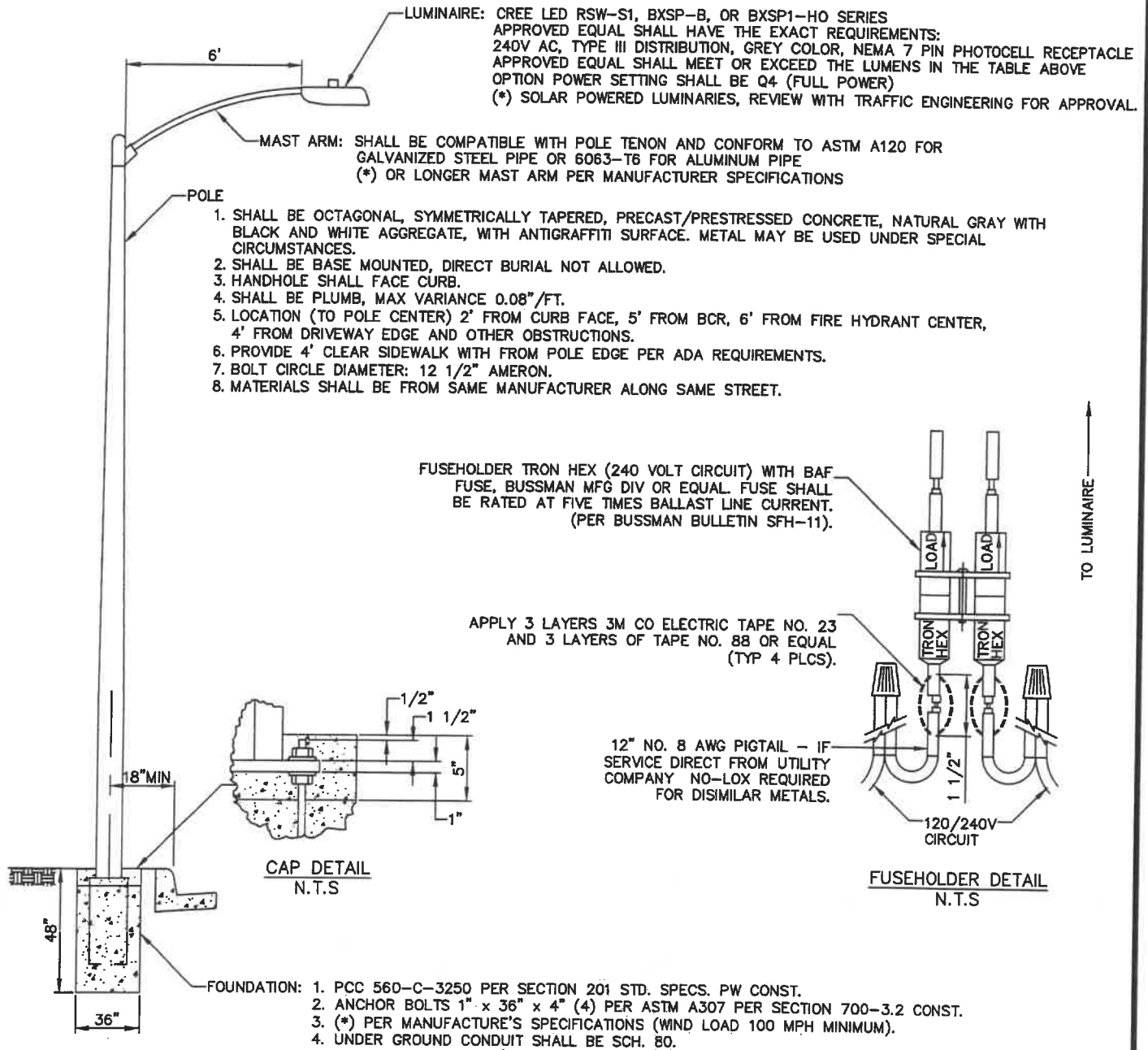


SL TYPE	LUMENS	WATTS	LUMINAIRE (CREE)	POLE HEIGHT	±1' LUMINAIRE	AMERON POLE
A	3,330	30	RSW-S1	23'-0"	26'-0"	1C1-23-AP6
B	5,000	50	RSW-S1	23'-0"	26'-0"	1C1-23-AP6
C	4,806	53	BXSP-B	28'-0"	30'-0"	1C1-28-AP6
D	10,162	101	BXSP1-HD	28'-0"	30'-0"	1C1-28-AP6
E	11,011	139	BXSP1-HD	28'-0"	30'-0"	1C1-28-AP6



CITY OF SAN BERNARDINO PUBLIC WORKS DEPARTMENT

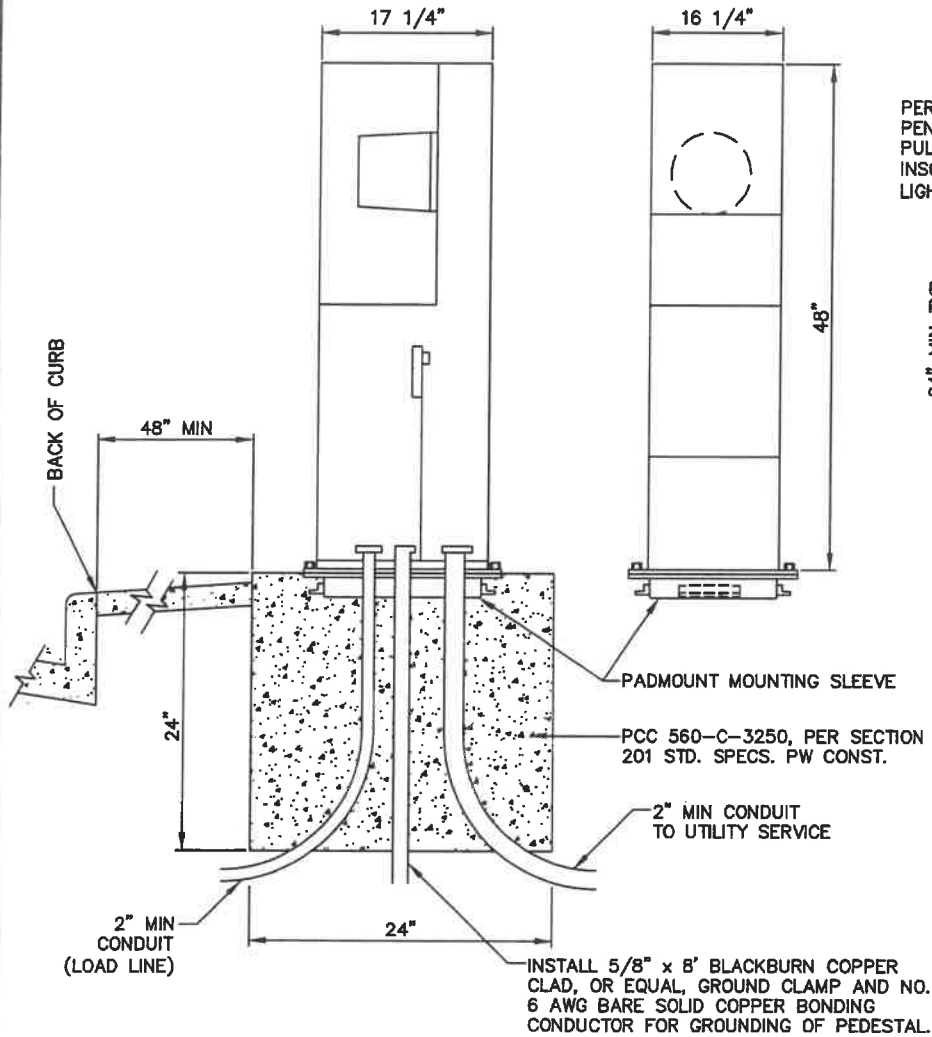
APPROVED Cell/22

STANDARD NO.

STREET LIGHT STANDARD

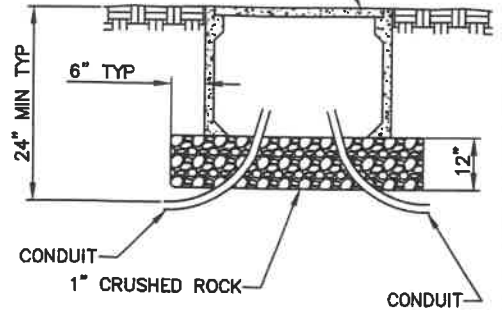
*[Signature]*  
 CITY ENGINEER

SL-1



SERVICE PEDESTAL DETAIL

PER CAL TRANS SPEC ES-8A,  
PENTA-HEAD LOCKING LID,  
PULL BOX LID, COVER TO BE  
INSCRIBED WITH "STREET  
LIGHTING"



DO NOT PLACE IN DRIVEWAY, CURB RAMP  
AREA OR ROADWAY, 3' MIN FROM FIRE  
HYDRANT. SPACE EQUALLY ON RUNS NOT  
TO EXCEED 200'.

PULL BOX DETAIL  
N.T.S

NOTES:

1. SERVICE PEDESTAL SHALL BE MYERS ELECTRIC PRODUCTS MEUG016-M100 OR EQUAL.
2. CIRCUIT BREAKERS SHALL BE SUITABLE FOR USE ON 120/240 VOLT SERVICE AND SHALL BE APPROVED BY UNDERWRITERS LABORATORY.
3. CABINET SHALL BE BONDED TO CONDUIT WITH COPPER GROUND WIRE EQUIVALENT TO NO. 6 A.W.G.
4. PULL BOX SHALL BE INSTALLED NEXT TO BASE WITH 2" SCH. 80 CONDUIT, MINIMUM.
5. SCH 80 CONDUITS SHALL EXTEND INTO CABINET 1' ABOVE FLOOR AND HAVE APPROVED CONDUIT BUSHING.
6. CONTRACTOR SHALL MAKE ARRANGEMENTS WITH UTILITY FOR 120/240 VOLT SERVICE AND SHALL BE RESPONSIBLE FOR ANY CHARGES BY THE UTILITY FOR ANY WORK.
7. PULL BOXES SHALL BE PLACED ON ONCOMING TRAFFIC SIDE OF POLES. TOP TO BE FLUSH WITH ADJACENT GRADE. KNOCK OUT TO BE SEALED WITH GROUT AFTER CONDUIT INSTALLATION. ALL PULL BOXES SHALL HAVE PENTA-HEAD LOCKING LIDS (PER CAL TRANS SPEC ES-8A) CONTRACTOR SHALL PROVIDE ALL LOCKS (PENTA-HEAD SOCKETS) FOR LIDS TO PW TRAFFIC DIVISION.

CITY OF SAN BERNARDINO PUBLIC WORKS DEPARTMENT

APPROVED Coll/22

STANDARD  
NO.

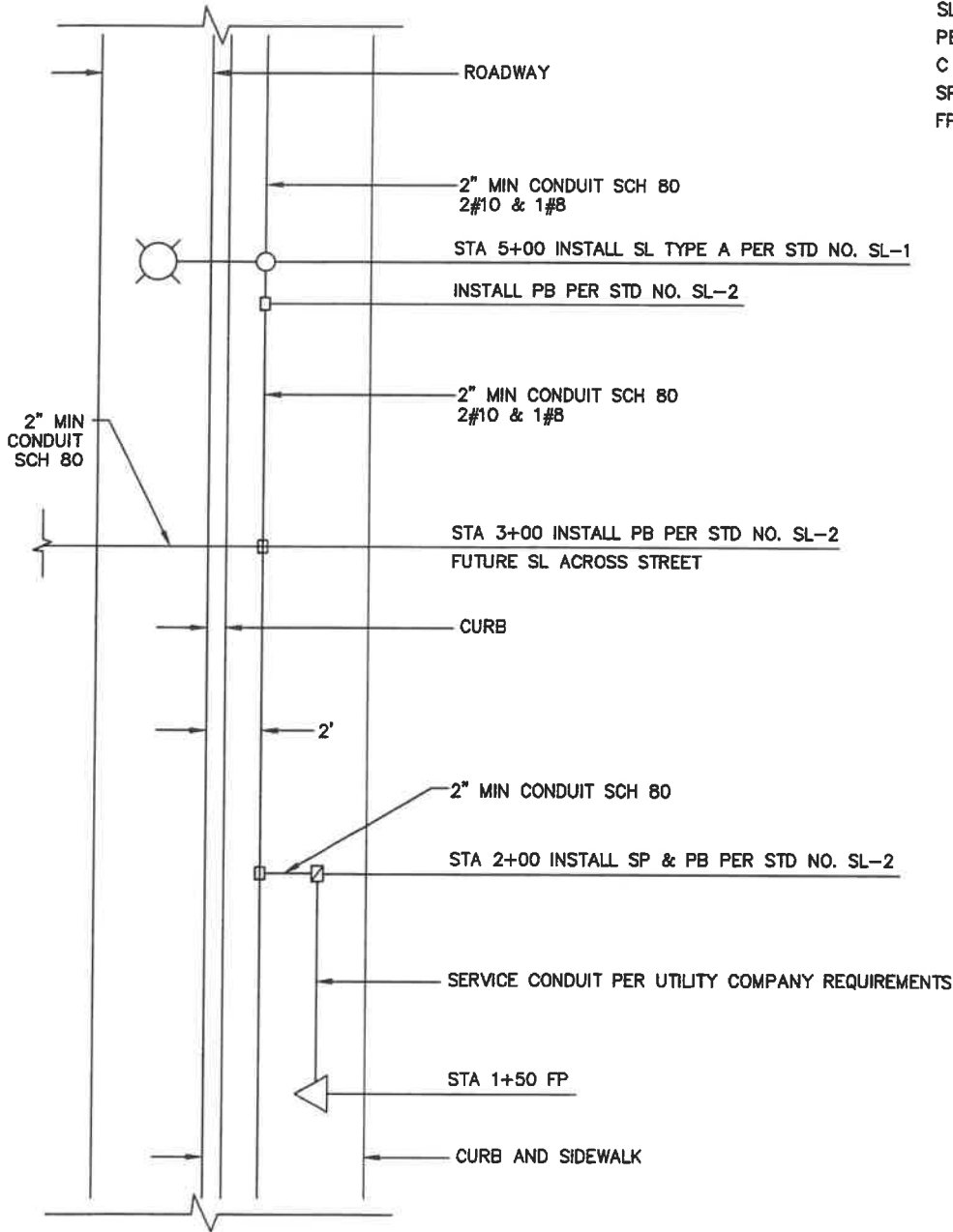
STREET LIGHT SERVICE PEDESTAL  
AND PULL BOX DETAILS

Alex Quispe  
CITY ENGINEER

SL-2

**LEGEND:**

- SL = STREET LIGHT
- PB = PULL BOX
- C = CONDUIT
- SP = SERVICE PEDESTAL
- FP = FEED POINT



SERVICE PEDESTAL DETAIL  
N.T.S

CITY OF SAN BERNARDINO PUBLIC WORKS DEPARTMENT

**STREET LIGHT TYPICAL  
DESIGNATION ON PLANS**

APPROVED 6/1/22

Alex Quijano  
CITY ENGINEER

STANDARD  
NO.

**SL-3**

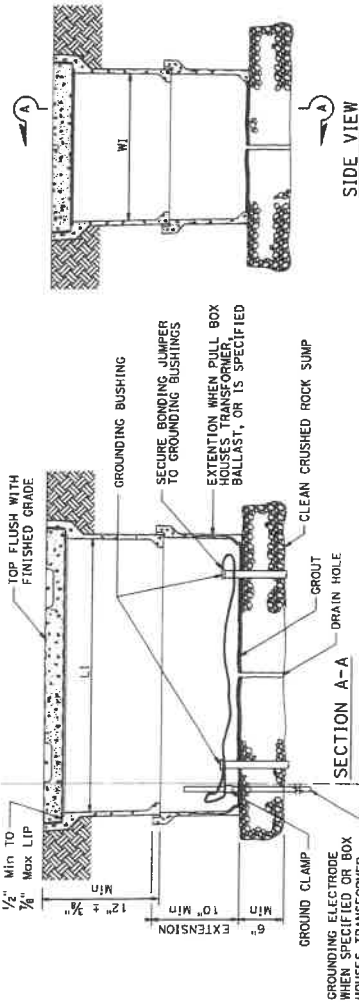
© 2015 California Department of Transportation  
All Rights Reserved

DISTRICT COUNTY ROUTE SHEET TOTAL SHEETS  
 PROJECT TOTAL PROJECT SHEETS  
 REGISTERED ELECTRICAL ENGINEER  
 Thomas G. Smith  
 APR 11 15, 2016  
 PLANS APPROVAL DATE  
 THE STATE OF CALIFORNIA  
 REGISTERED ELECTRICAL ENGINEER  
 NO. 45297  
 THE STATE OF CALIFORNIA  
 REGISTERED ELECTRICAL ENGINEER  
 NO. 45297  
 THE STATE OF CALIFORNIA  
 REGISTERED ELECTRICAL ENGINEER  
 NO. 45297

TO ACCOMPANY PLANS DATED \_\_\_\_\_

**NOTES:**

1. The nominal dimensions of the opening in which the cover sets shall be the same as the cover dimensions except the length and width dimensions shall be  $\frac{1}{8}$ " greater.
2. Covers and boxes shall be interchangeable with California standard male and female gages, when interchanged with a standard male or female gage, the top surfaces shall be flush within  $\frac{1}{8}$ ". Top outside radius of covers and pull boxes shall have a  $\frac{1}{8}$ " radius.
3. Dimensions for the cover for non-traffic pull box are nominal values.

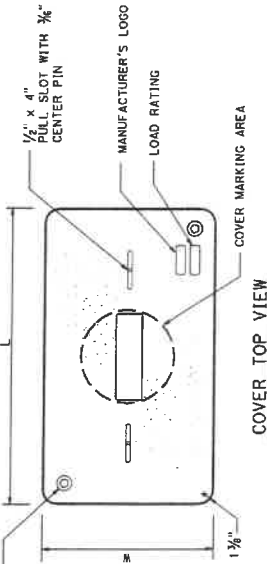


**INSTALLATION DETAILS**

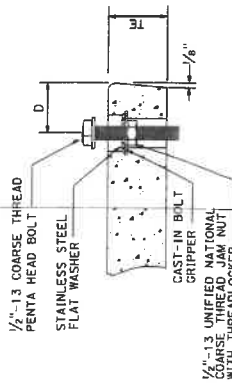
**DETAIL A**

$\frac{1}{2}$ " STAINLESS STEEL HARDWARE WITH RECESS IN COVER FOR HARDWARE (TOTAL 2)

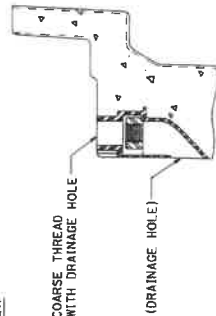
**SIDE VIEW**



**COVER TOP VIEW**



**TYPICAL COVER CAPTIVE BOLT OR SIMILAR**



**TYPICAL THREADED INSERT OR SIMILAR**

**DIMENSION TABLE**

PULL BOX	PULL BOX			COVER				MINIMUM WEIGHT	
	MINIMUM DEPTH	MINIMUM DEPTH EXTENSION	MINIMUM WEIGHT	LI Min	TE	D	L		W
No. 3/4	12"	N/A	40 lb	1' - 3"	1 3/4"	1 3/4"	1' - 3 3/4"	10" - 10 1/2"	30 lb
No. 5	12"	10"	55 lb	1' - 8"	2"	1 3/4"	1' - 11 1/2"	1' - 1 1/2"	60 lb
No. 6	12"	10"	70 lb	2' - 4 1/2"	2"	2"	2' - 6 1/2"	1' - 5 1/2"	85 lb

STATE OF CALIFORNIA  
DEPARTMENT OF TRANSPORTATION  
**ELECTRICAL SYSTEMS  
(NON-TRAFFIC PULL BOX)**

NO SCALE

RSP ES-8A DATED APRIL 15, 2015 SUPERSEDES STANDARD PLAN ES-8A DATED OCTOBER 30, 2015 - PAGE 173 OF THE STANDARD PLANS BOOK DATED 2015.

**REVISED STANDARD PLAN RSP ES-8A**